

Complex Faces
(no links to facemorph.me)

Using the website facemorph.me I have interpolated between photos of pairs of mathematicians, creating a "complex face".

For the first three examples, I have given a hint, followed on the next page by the two names. Clicking on the hint or names leads to the **facemorph.me** webpage that shows the original photos the interpolations. This page allows either automatic oscillation between the faces, or a user controlled slider.

For the remaining pictures, can you can guess who the two mathematicians are? Many are at the conference; a few are not (or not even alive), but most of these should be well known.

I will post solutions later. One warning: when uploading pictures to **facemorph**, the software alters the photo to match certain internal templates. Usually it is still recognizable, and I have tried to avoid cases when it was not.



1. Our founders



1. Ahlfors + Beurling



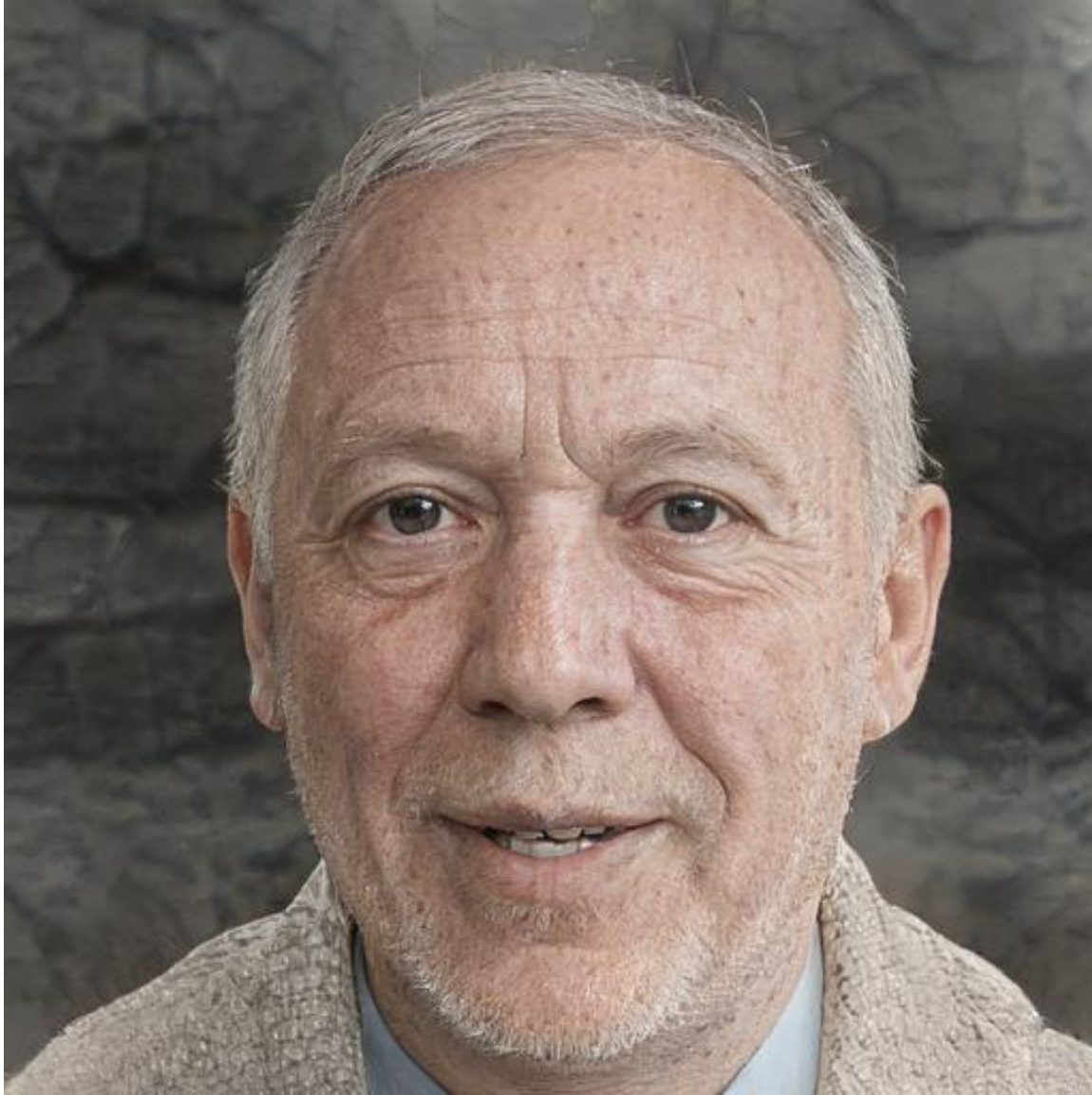
2. Two terrific topologists



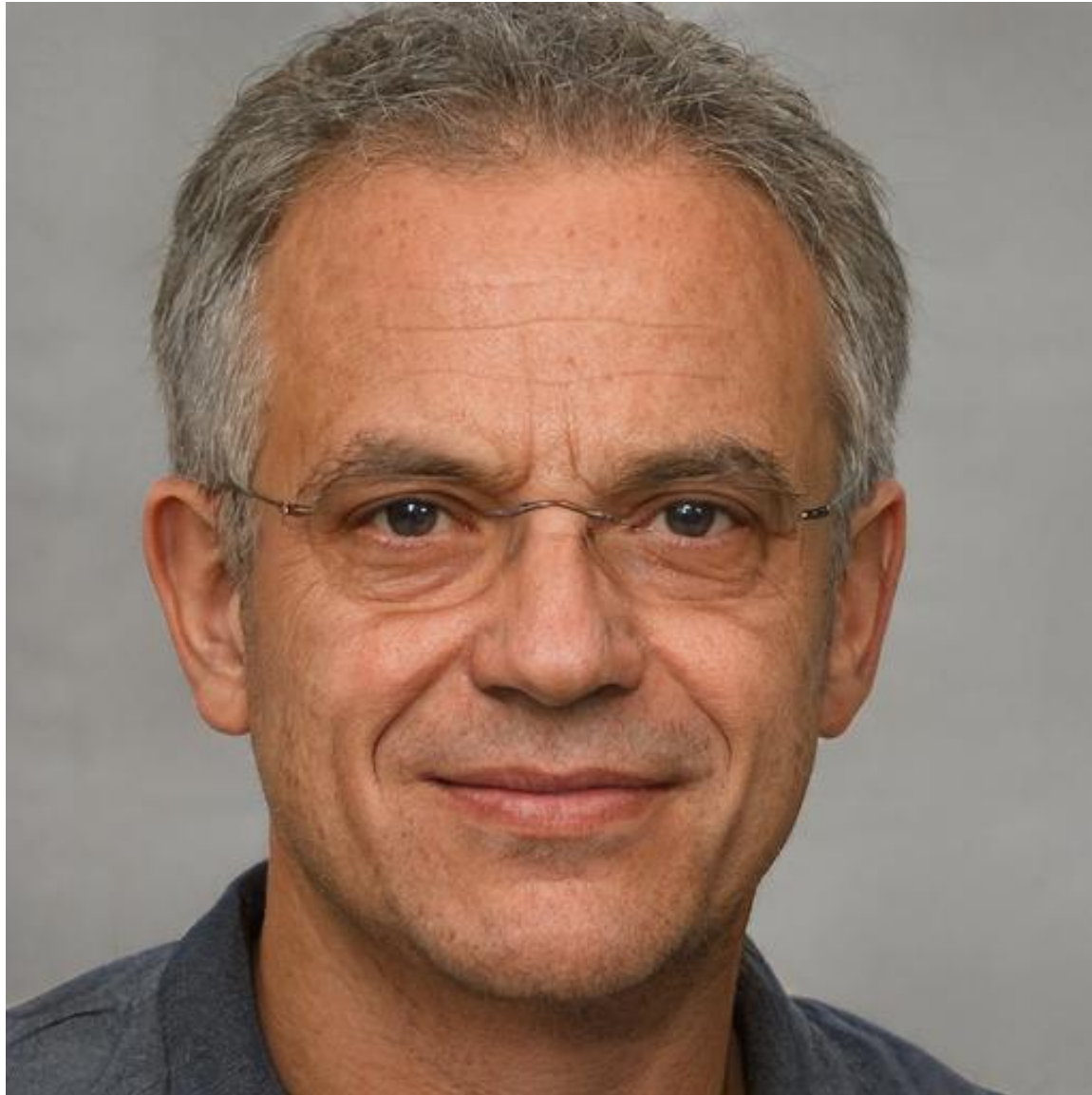
2. Thurston + Sullivan



3. Cited four times a day in physics.



3. Chern + Simons



4. Classy mathematicians



5. Two Fields medalists



6. French fractal aficionados



7. Advisor and student



8. Wandering and not wandering



19. SLE but not S or L



10. Analysts from A to Z



11. LDP for SLE



12. Two analysts, one name



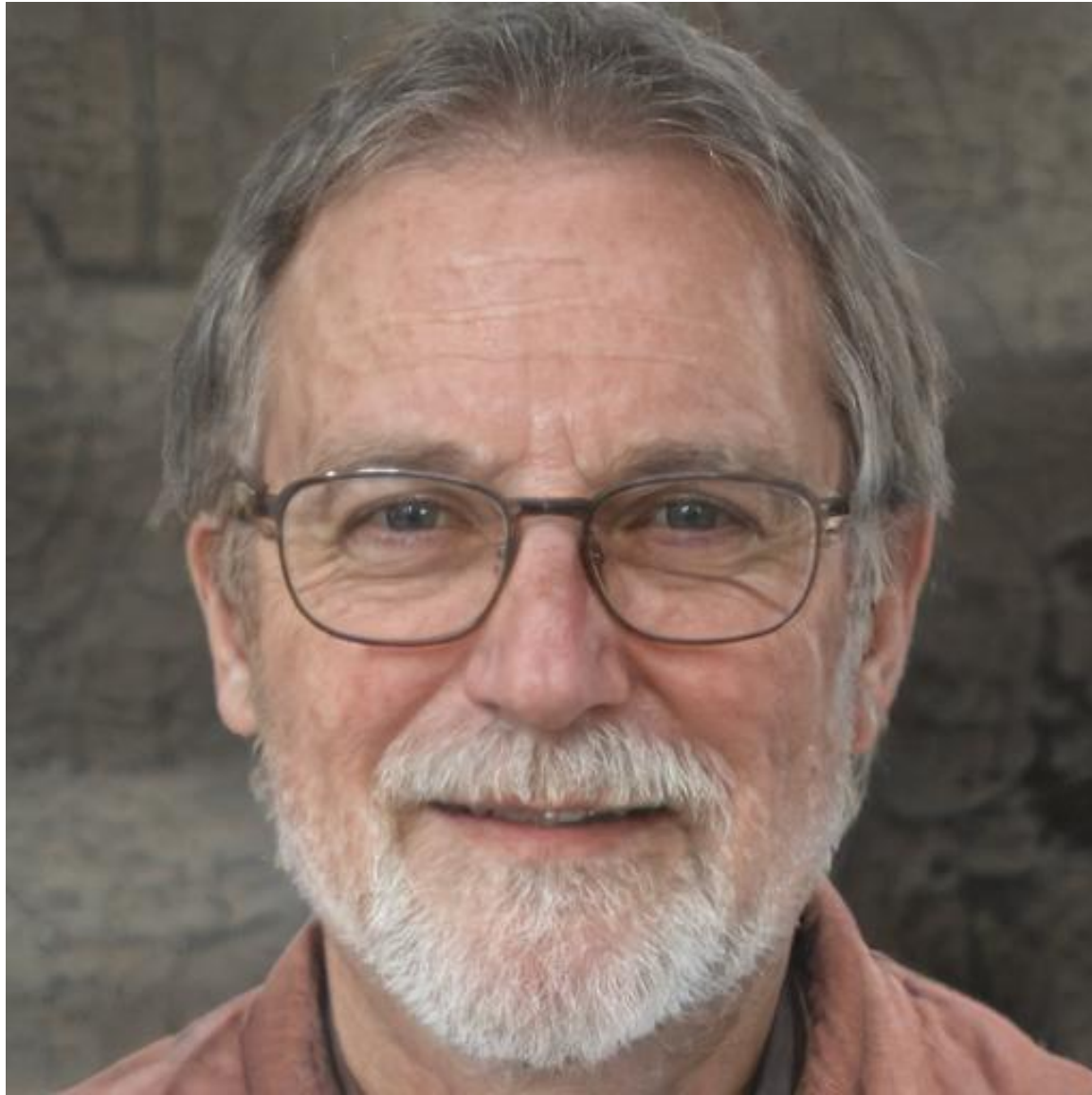
13. Hi, trained ace (an anagram)



14. S & L



15. Two random analysts



16. Two more Fields medalists



17. Smooth and positive



18. Points of the Mandelbrot sets



19. Peter and the Wolff



20. Double Alexander.



21. Knows about Coulomb gas



22. Student and advisor



23. Random path experts, old and new



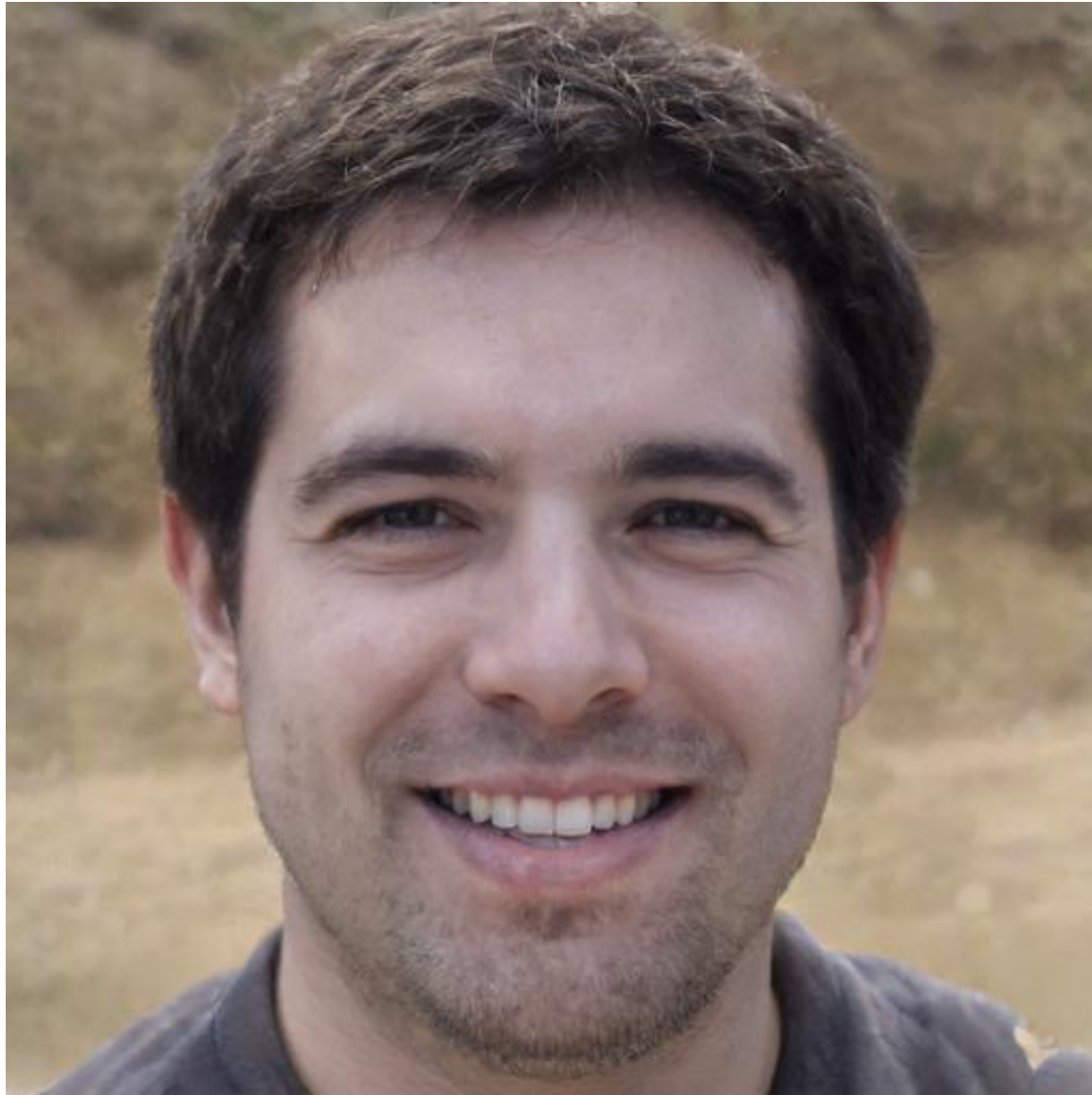
24. Very organized



25. Smirnov isn't sharp



26. They work in groups



27. Oxford vs. Cambridge